

## ESTIMATE

विदर्भ शेतकरी कृषीमाल प्रक्रीया & उद्योग प्रोड्युसर कंपनी लि.

### DETAILED ESTIMATE

NAME OF WORK- CONSTRUCTION OF G.I. SHED

(कृषी उत्पादनाचे संकलन युनिट)

AT. SHIRAJGAON KASABA

TA. CHANDUR BAZAR

DISTT.AMRAVATI (MAHARASTRA)

ESTIMATED COST RS.--

70,00,000.00

**ESTIMATE**

Division :- Public Work Division Achalpur  
Sanctioned Estimate No.  
Fund Head :-  
Major Head :-  
Minor Head :-  
Service Head :-  
Departmental Head :-

Estimate framed in the office of the Executive Engineer Public Work Division Achalpur for the Probable Expences that will be incurred on

**Estimate for Construction of G.I.Shed At.Shirajgaon Kasaba Ta. Chandur Bazar  
( कृषी उत्पादनाचे संकलन युनिट )**

**7000000**

Administratively approved under :-

Dated :-.

Technically sanctioned under :-

No. \_\_\_\_\_ Dated :- / /2021

Estimate prepared By :-

Checked By :- \_\_\_\_\_

  
**Sandip H. Ingle**  
B. E. Civil Engg.  
Chandur Bazar  
Mob. 9673038120  
R. A./A.M.T./Er,-59/2017

## GENERAL DISCRPTION

(1) Name of Work :- Estimate framed to cover the cost of  
**Construction of G.I.Shed At.Shirajgaon Kasaba Ta. Chandur Bazar**


(2) Amount :- **7000000**

(3) Authority :- Proposed under

(4) Provisions :- Following provisions done in this Estimate

- Excavation for foundation [1.20m×1.20m×1.80m ]
- Sand filling & 80mm soling[1.20m×1.20m×0.30m ]
- Cement concrete [1.50m×1.50m×0.15m]
- R.C.C Raft [1.10m×1.10m×0.15m]
- R.C.C. Column [23cm×23cm.@3.0m.c/c&1.90m.above G.L.
- R.C.C Beam [23cm.×30CM. At G.L.
- Brick Masonary [23cm. Thk. ]
- 12.00 MM Plaster [INNER SIDE]
- 20MM Plaster [OUTER SIDE]
- Providing and applying Two coats of wall care Putty of 2mm thickness
- Providing and applying two coats of exterior acrylic emulsion paint
- Providing and applying two coats of textured synthetic paint
- Cement concrete M-15 for coping [ on top of wall 23cm.×10cm.]
- Providing and fabricating structural steel work in rolled sections like joists, channels, angles, tees etc
- Providing and fixing colour coated Zinacalume ( R ) AZ150 ( min 150 gms/sq.mt. total on each side ) profiled sheets for roofing
- Providing and fixing self supporting steel roofing
- Providing and fixing in position (as per 1868 / 1982) Aluminium sliding window
- Royalty Charges & Resting Report Charges OF Materials.
- G.S.T. provide @12 % on Civil Cost
- Information Board

(5) Rates & Specifications :- Rates are taken as per new SSR 20-21 wef 1/10/2020 will be carried out as per the standred specification and directed by Engineer in charge.

  
**Sandip H. Ingle**  
B.E. Civil Engg.  
Chandur Bazar  
Mob. 9673038120  
R.A./A.M.T./En.-59/2017

## GENERAL ABSTRACT

NAME OF WORK:-O/W CONSTRUCTION OF G.I. SHED AT.SHIRAJGAON KASABA  
TA. CHANDUR BAZAR

| Sr.No. | Perticular                                  | Amount      |
|--------|---|-------------|
| 1      | Cost As per Part A Civil Cost               | RS. 5948553 |
| 2      | Cost As per Part B Testing Charges          | RS. 21441   |
| 3      | Cost As per Part C Royalty Charges          | RS. 243886  |
| 4      | Total Amount                                | RS. 6213880 |
| 5      | Add 1% Insurance                            | RS. 62139   |
| 6      | Add 12 % G.S.T.Charges on civil Cost Part A | RS. 713826  |
| 7      | Add Contengency Charges 2%                  | RS. 10155   |
| 8      | Total amount of Estimate                    | Rs. 7000000 |

  
**Sandip H. Ingle**  
B.E. Civil Engg.  
Chandur Bazar  
Mob. 9673038120  
R.A./A.M.T./Er.-59/2017

# ABSTRACT

NAME OF WORK:-O/W CONSTRUCTION OF G.I. SHED AT.SHIRAJGAON KASABA TA. CHANDUR BAZAR

| SR. NO | ITEM OF WORK  | QTY    | RATE     | UNIT | AMOUNT |
|--------|---|--------|----------|------|--------|
| 1      | Excavation for foundation in earth, soil of all types, sand, gravel and soft murum, including removing the excavated material up to a distance of 50 m. beyond the building area and stacking and spreading as directed, dewatering, preparing the bed for the foundation and necessary back filling, ramming, watering including shoring and strutting etc. complete. (Lift upto 1.5 m.) By Mechanical Means   | 315.87 | 182.00   | CUM  | 57488  |
| 2      | Excavation for foundation in hard murum including removing the excavated material upto a distance of 50 metres beyond the building area and stacking and spreading as directed, dewatering, preparing the bed for the foundation and necessary back filling, ramming, watering including shoring and strutting etc. complete. (Lift from 1.5 to 3.0m) By Manual Means   | 260.57 | 331.00   | CUM  | 86250  |
| 3      | Providing soling using 80 mm size trap metal in 15 cm. layer including filling voids with Crushed sand/grit, ramming, watering etc. complete.   | 178.32 | 1577.56  | CUM  | 281317 |
| 4      | Providing and laying Cast in situ/Ready Mix cement concrete in M-10 of trap/ granite/ quartzite/ gneiss metal for foundation and bedding including bailing out water, formwork, laying/pumping, compacting, roughening them if special finish is to be provided, finishing if required and curing complete, with fully automatic micro processor based PLC with SCADA enabled reversible Drum Type mixer/concrete Batch mix plant (Pan mixer) etc. complete. With natural sand/V.S.I. quality Artificial Sand   | 90.96  | 5875.88  | CUM  | 534482 |
| 5      | Providing and laying in situ/Ready Mix cement concrete M-20 of trap / granite /quartzite/ gneiss metal for R.C.C. work in foundations like raft, strip foundations, grillage and footings of R.C.C. columns and steel stanchions etc. including bailing out water, formwork, laying/pumping cover blocks, compaction and curing roughening the surface if special finish is to be provided (Excluding reinforcement and structural steel) etc. complete, with fully automatic micro processor based PLC with SCADA enabled reversible Drum Type mixer/ concrete Batch mix plant (Pan mixer) etc. complete. With natural sand/V.S.I. quality Artificial Sand   | 20.22  | 6786.81  | CUM  | 137257 |
| 6      | Providing and laying Cast in situ/Ready Mix cement concrete M-20 of trap / granite /quartzite/ gneiss metal for R.C.C. columns as per detailed designs and drawing or as directed including centering, formwork, cover blocks, laying/pumping, compaction finishing the formed surfaces with cement mortar 1:3 of sufficient minimum thickness to give a smooth and even surface or roughening if special finish is to be provided and curing etc. complete,(Excluding reinforcement and structural steel).with fully automatic micro processor based PLC with SCADA enabled reversible Drum Type mixer/ concrete Batch mix plant (Pan mixer) etc. complete. With natural sand/V.S.I. quality Artificial Sand | 25.84  | 12570.41 | CUM  | 324807 |
| 7      | Providing and laying Cast in situ/Ready Mix cement concrete M-20 of trap / granite /quartzite/ gneiss metal for R.C.C. beams and lintels as per detailed designs and drawings or as directed including centering, formwork, cover blocks, laying/pumping, compactionand roughening the surface if special finish is to be provided and curing etc. complete. (Excluding reinforcement and structural steel). with fully automatic micro processor based PLC with SCADA enabled reversible Drum Type mixer/ concrete Batch mix plant (Pan mixer) etc. complete. With natural sand/V.S.I. quality Artificial Sand   | 33.44  | 11217.61 | CUM  | 375088 |

|    |   |        |          |     |        |
|----|---|--------|----------|-----|--------|
| 8  | Providing second class Burnt Brick masonry with conventional/ I.S. type bricks in cement mortar 1:6 in foundations and plinth of inner walls/ in plinth external walls including bailing out water manually , striking joints on unexposed faces, raking out joints on exposed faces and watering etc. Complete.  | 13.74  | 7515.79  | CUM | 103243 |
| 9  | Providing second class Burnt Brick masonry with conventional/ I.S. type bricks in cement mortar 1:6 in superstructure including striking joints, raking out joints, watering and scaffolding etc. Complete  | 39.93  | 7726.79  | CUM | 308544 |
| 10 | Providing and fixing in position TMT - FE - 500 bar reinforcement of various diameters for R.C.C. pile caps, footings, foundations, slabs, beams columns, canopies, staircase, newels, chajjas, lintels pardis, copings, fins, arches etc. as per detailed designs, drawings and schedules. including cutting, bending, hooking the bars, binding with wires or tack welding and supporting as required complete.   | 4.62   | 65358.23 | MT  | 302149 |
| 11 | Providing and laying Cast in situ/Ready Mix cement concrete M-15 of trap/ granite/quartzite/gneiss metal for coping to plinth or parapet, moulded or chamfered as per drawing or as directed including steel centering, plywood/ steel formwork compacting, roughening them if special finish is to be provided, finishing uneven and honeycombed surface and curing etc. complete. The Cement Mortar 1:3 plaster is considered for rendering uneven and honeycombed surface only. Newly laid concrete shall be covered by gunny bag, plastic, tarpaulin etc. (Wooden centering will not be allowed.) | 83.92  | 6234.17  | CUM | 523176 |
| 12 | Providing and fixing steel frame of angle 40 x 40 x 5 mm size for windows with 16 mm dia. mild steel bars horizontally at 10 cm c/c for ventilator portion and 15 cm c/c for remaining portion with M.S. flat of size 40 x 6 mm vertical at center including iron hold fast boxes for fixing 40 x 6 mm vertical at center including iron hold fast boxes for fixing shutters including welding finishing painting etc. complete.  | 30.72  | 1795.00  | SQM | 55142  |
| 13 | Providing and fixing steel ventilator fully glassed partly top hung and partly fixed as per detailed drawing without hot dip zinc coating including fabricating glazing with plain obscured glass pane and approved type and quality and fastening without teak wood boxing and artitecture and oil painting two coat....etc complete   | 4.32   | 2583.00  | SQM | 11159  |
| 14 | Providing internal cement plaster 12mm thick in single coat in cement mortar 1:4 without neeru finish to concrete or brick surfaces, in all positions including scaffolding and curing etc. complete.   | 313.35 | 273.82   | SQM | 85800  |
| 15 | Providing internal cement plaster 20mm thick in two coats in cement mortar 1:4 without neeru finish, to concrete, brick surface, in all positions including scaffolding and curing etc.complete.  | 345.06 | 382.20   | SQM | 131882 |
| 16 | Providing sand faced plaster externally in cement mortar using approved screened sand, in all positions including base coat of 15 mm thick in cement mortar 1:4 using waterproofing compound at 1 kg per cement bag curing the same for not less than 2 days and keeping the surface of the base coat rough to receive the sand faced treatment 6 to 8 mm thick in cement mortar 1:4 finishing the surface by taking out grains and curing for fourteen days scaffolding etc.complete.  | 94.00  | 620.69   | SQM | 58345  |

|    |   |         |          |     |         |
|----|---|---------|----------|-----|---------|
| 17 | Providing and applying Two coats of wall care Putty of 2mm thickness for plastered surface and 5-6mm thickness finished concrete surface to Ceiling and Walls to prepare surface even and smooth of Brands<br>BIRLA WHITE, BERGER, BISION, J.K., make, etc complete.  | 313.35  | 87.00    | SQM | 27261   |
| 18 | Providing and applying two coats of exterior acryallic emulsion paint confirming to corresponding I.S. of approved manufacture and of approved colour to the plastered surfaces including cleaning ,preparing the plaster surface, applying primer coat ,scaffolding if necessary , and watering the surface for two days etc complete.   | 344.07  | 218.00   | SQM | 75007   |
| 19 | Providing and applying two coats of textured synthetic paint of approved shade and quality and one coat of primer before applying textured paint including scaffolding if necessary preparing surface by thoroughly cleaning oil, grease, dirt and other materials as required, etc. complete.  | 510.30  | 147.00   | SQM | 75014   |
| 20 | Providing and fabricating structural steel work in rolled sections like joists, channels, angles, tees etc. as per detailed design and drawings or as directed including cutting, fabricating, hoisting, erecting, fixing in position making riveted / bolted /welded connections without connecting plates, braces etc. and including one coat of anticorrosive paint and over it two coats of oil painting of approved quality and shade etc. complete.   | 6.23    | 75938.00 | M.T | 473136  |
| 21 | Providing and fixing colour coated Zinalume ( R ) AZ150 ( min 150 gms/sq.mt. total on each side ) profiled sheets for roofing. The feed material is manufactured out of nominal 0.45 mm Base Metal Thickness ( BMT ) (0.5 mm TCT ), Hi-strength steel with min.550 MPa yield strength, metallic hot dip coated with Aluminium-Zinc alloy (55% aluminium 43.4% zinc 1.6% silicon) with COLORBOND ( R ) steel quality super durable polyester paint coat ( with inorganic pigment). The paint shall have a total coating thickness of nominal 35 um, comprising of nominal 25 um exterior coat on top surface and nominal 10 um reverse coat on back surface. Profile sheet shall have nom. 950-1050 mm effective cover width and nominal 25-30 mm deep ribs with subtle square fluting in the five pan at nominal 180-250 mm center- to-center. The end rib shall be designed for anti-capillary groove. and return leg. The feed material should have coil manufacturers product details marked a regular interval. Including fasteners with min. fastened with min. 25 um Zinc-Tin alloy coated, Hex head, self-drilling screw etc. complete. (weight of profile 4.52 Kilogram/Square Metre) | 1036.88 | 1042.00  |     | 1080431 |
| 22 | Providing and fixing self supporting steel roofing system for a Godown or alike made up of structural grade steel sheet of 912 millimeter width ( tolerance + / - 2 millimeter ), moulded at site using mechanical press dies to the desired curve and shape to form 605 millimeter wide interlocking panels . The interlocking panels shall be pressed to close the seam forming water tight joints for a span of 25.00 meter having arch rise as 5.00 meter, arch length 29.00 meter The base material made up of imported galvalume steel complying to ASTM A792 having base metal thickness of 1.20 millimeter ( tolerace + / - 0.02 millimeter ) with alloy coating AZ 150 and paint coating of regular modified polyester , top coat 25 micron and bottom coat 12 micron as per approved colour , including fixing hangers , clamps etc.as may be necessary of Proflex standard, including fixing sky light of 2 millimeter thick polycarbonate sheet of size 2' x 14' and turbo ventilator of 24" diameter to be installed at every 30 feet along the length of roof including finishing , testing and cleaning etc. complete.   | 80.88   | 2176.00  |     | 175995  |

|                          |   |        |         |     |                |
|--------------------------|---|--------|---------|-----|----------------|
| 23                       | Filling in plinth and floors with contractors material/brought from outside and approved by Engineer incharge in layers of 15 cm to 20 cm including watering and compaction etc. complete.  |        |         |     |                |
|                          |   | 787.77 | 833.66  | CUM | 656732         |
| 24                       | Providing and fixing board displaying information, such as 'Name of work, Tender cost, Name of Contractor, Work completion and liability period etc', having rectangular shape of 1.20m x 0.90m size made out 18 gauge (1.25mm) thick mild steel sheet painted with one coat of Zinc chromate stoving primer and two coats of enamel paint on front side and grey stove enamel on back side and border / messages / symbols etc. with approved colour shade paint complete, on M.S.angle of size 35 x 35 x 3 mm frame with properly cross braced M.S. angles of size 35mmx35mmx3mm duly painted including Two M.S. angle iron posts of size 65 mm x 65 mm x 6 mm, 3.65 m long painted with alternate black and white bands of 25 cm width including all fixtures etc.and fixing the boards in 1:4:8 concrete block of size 60 cm x 60 cm x 75 cm including, excavation, refilling, transportation, and labour etc complete. Spec. No. As directed by Engineer in Charge |        |         |     |                |
|                          |   | 1.00   | 8848.00 | NO  | 8848           |
| <b>PART A-Civil Cost</b> |   |        |         |     | <b>8848</b>    |
|                          |   |        |         |     | <b>5948553</b> |

## 25 BASIC TEST

|  |                                      |   |         |      |                 |
|--|--------------------------------------|---|---------|------|-----------------|
| <b>80 MM METAL</b>                       |                                      |   |         |      |                 |
| I  | Water Absorbtion                     | 2 | 875.00  | Test | 1750.00         |
| II                                       | Spe. Gravity                         | 2 | 855.00  | Test | 1710.00         |
| III                                      | Impact                               | 2 | 875.00  | Test | 1750.00         |
| IV                                       | Seive Analysis                       | 1 | 695.00  | Test | 695.00          |
| <b>TESR FOR CEMENT</b>                   |                                      |   |         |      |                 |
| I  | Setting Time Initial & final         | 2 | 635.00  | Test | 1270.00         |
| II                                       | Fineness Modulus(Sieve Analysis)     | 1 | 635.00  | Test | 635.00          |
| III                                      | Spec.Gravity                         | 2 | 635.00  | Test | 1270.00         |
| IV                                       | Standard Consistency                 | 1 | 635.00  | Test | 635.00          |
| <b>TEST FOR SAND</b>                     |                                      |   |         |      |                 |
| I  | Fineness Modulus;                    | 1 | 695.00  | Test | 695.00          |
| II                                       | Silt Content                         | 1 | 695.00  | Test | 695.00          |
| <b>STEEL BARS</b>                        |                                      |   |         |      |                 |
| I  | Group Test                           | 2 | 1200.00 | Test | 2400.00         |
| <b>Murrum</b>                            |                                      |   |         |      |                 |
| I  | Psticity Index                       | 2 | 1200.00 | Test | 2400.00         |
| <b>Concrete cubes M-15</b>               |                                      |   |         |      |                 |
| I  | Compressive strength of c.c Cube     | 2 | 695.00  | Test | 1390.00         |
| <b>Concrete cubes M-20</b>               |                                      |   |         |      |                 |
| I  | Compressive strength of c.c Cube     | 4 | 695.00  | Test | 2780.00         |
| <b>Bricks</b>                            |                                      |   |         |      |                 |
| I  | Water absorption                     | 1 | 683.00  | Test | 683.00          |
| II                                       | Crushing Strength                    | 1 | 683.00  | Test | 683.00          |
| <b>PART B -Total Charges for testing</b> |                                      |   |         |      | <b>21441.00</b> |
| 26                                       | <b>Part C -Total Royalty charges</b> |   |         | Rs.  | <b>243886</b>   |

(Civil Cost+Testing Charges+Royalty Charges)Total Amount Rs

6213880

## MESUREMENT SHEET

NAME OF WORK:-O/W CONSTRUCTION OF G.I. SHED AT.SHIRAJGAON KASABA TA. CHANDUR BAZAR

| Sr. No. | ITEMS   | NO | L     | B     | D    | QTY     | TOTAL QTY. | UNIT |
|---------|---|----|-------|-------|------|---------|------------|------|
| 1       | Excavation for foundation in earth, soil of all types, sand, gravel and soft murum, including removing the excavated material up to a distance of 50 m. beyond the building area and stacking and spreading as directed, dewatering, preparing the bed for the foundation and necessary back filling, ramming, watering including shoring and strutting etc. complete. (Lift upto 1.5 m.)<br>By Mechanical Means  |    |       |       |      |         |            |      |
|         | Column  | 32 | 1.20  | 1.20  | 1.50 | 69.120  |            |      |
|         |   | 1  | 35.00 | 23.50 | 0.30 | 246.750 | 315.870    | CUM. |
| 2       | Excavation for foundation in hard murum including removing the excavated material upto a distance of 50 metres beyond the building area and stacking and spreading as directed, dewatering, preparing the bed for the foundation and necessary back filling, ramming, watering including shoring and strutting etc. complete. (Lift from 1.5 to 3.0m) By Manual Means   |    |       |       |      |         |            |      |
|         | Column  | 32 | 1.20  | 1.20  | 0.30 | 13.824  | 260.574    | CUM  |
|         | Paver   | 1  | 35.00 | 23.50 | 0.30 | 246.750 |            |      |
| 3       | Providing soling using 80 mm size trap metal in 15 cm. layer including filling voids with Crushed sand/grit, ramming, watering etc. complete.   |    |       |       |      |         |            |      |
|         | Column  | 32 | 1.20  | 1.20  | 0.30 | 13.824  | 178.324    | CUM. |
|         |   | 1  | 35.00 | 23.50 | 0.20 | 164.5   |            |      |
| 4       | Providing and laying Cast in situ/Ready Mix cement concrete in M-10 of trap/ granite/ quartzite/ gneiss metal for foundation and bedding including bailing out water, formwork, laying/pumping, compacting, roughening them if special finish is to be provided, finishing if required and curing complete, with fully automatic micro processor based PLC with SCADA enabled reversible Drum Type mixer/concrete Batch mix plant (Pan mixer) etc. complete. With natural sand/V.S.I. quality Artificial Sand   |    |       |       |      |         |            |      |
|         |   | 32 | 1.20  | 1.20  | 0.15 | 6.912   |            |      |
|         |   | 1  | 35.00 | 23.50 | 0.10 | 82.3    | 90.962     | CUM. |
|         | steps   | 10 | 1.50  | 1.20  | 0.10 | 1.800   |            |      |
| 5       | Providing and laying in situ/Ready Mix cement concrete M-20 of trap / granite /quartzite/ gneiss metal for R.C.C. work in foundations like raft, strip foundations, grillage and footings of R.C.C. columns and steel stanchions etc. including bailing out water, formwork, laying/pumping cover blocks, compaction and curing roughening the surface if special finish is to be provided (Excluding reinforcement and structural steel) etc. complete, with fully automatic micro processor based PLC with SCADA enabled reversible Drum Type mixer/ concrete Batch mix plant (Pan mixer) etc. complete. With natural sand/V.S.I. quality Artificial Sand |    |       |       |      |         |            |      |
|         | Footing   | 32 | 1.20  | 1.20  | 0.30 | 13.824  |            |      |
|         |   | 32 | 0.20  |       |      | 6.400   | 20.224     | CUM. |

- 6 Providing and laying Cast in situ/Ready Mix cement concrete M-20 of trap / granite /quartzite/ gneiss metal for R.C.C. columns as per detailed designs and drawing or as directed including centering, formwork, cover blocks, laying/pumping, compaction finishing the formed surfaces with cement mortar 1:3 of sufficient minimum thickness to give a smooth and even surface or roughening if special finish is to be provided and curing etc. complete,(Excluding reinforcement and structural steel).with fully automatic micro processor based PLC with SCADA enabled reversible Drum Type mixer/ concrete Batch mix plant (Pan mixer) etc. complete. With natural sand/V.S.I. quality Artificial Sand

**Ground Floor**

Column upto Plinth.

C1 33 0.30 0.60 1.20 7.128

Column upto Slab

C3 33 0.30 0.60 3.15 18.711

**25.839 CUM.**

- 7 Providing and laying Cast in situ/Ready Mix cement concrete M-20 of trap / granite /quartzite/ gneiss metal for R.C.C. beams and lintels as per detailed designs and drawings or as directed including centering, formwork, cover blocks, laying/pumping, compaction and roughening the surface if special finish is to be provided and curing etc. complete. (Excluding reinforcement and structural steel). with fully automatic micro processor based PLC with SCADA enabled reversible Drum Type mixer/ concrete Batch mix plant (Pan mixer) etc. complete. With natural sand/V.S.I. quality Artificial Sand

G.F

plinth beam

20 3.50 0.30 0.35 7.350  
12 3.83 0.30 0.35 4.826

**33.437 CUM.**

Lintel beam

12 1.80 0.30 0.20 1.296  
8 1.80 0.30 0.20 0.864

Slab beam

30 3.50 0.30 0.30 9.450  
28 3.83 0.30 0.30 9.652

- 8 Providing second class Burnt Brick masonry with conventional/ I.S. type bricks in cement mortar 1:6 in foundations and plinth of inner walls/ in plinth external walls including bailing out water manually, striking joints on unexposed faces, raking out joints on exposed faces and watering etc. Complete.

12 3.50 0.23 0.60 5.796  
8 3.83 0.23 0.60 4.228

**13.737 CUM**

steps 10 1.50 0.90 0.15 2.025  
10 1.50 0.60 0.15 1.350  
10 1.50 0.15 0.15 0.338

- 9 Providing second class Burnt Brick masonry with conventional/ I.S. type bricks in cement mortar 1:6 in superstructure including striking joints, raking out joints, watering and scaffolding etc. Complete

G.F

|    |      |      |      |               |
|----|------|------|------|---------------|
| 12 | 3.50 | 0.23 | 3.15 | 30.429        |
| 8  | 3.83 | 0.23 | 3.15 | 22.199        |
|    |      |      |      | <u>52.628</u> |

**39.932 CUM.**

DEDUCTIONS

|            |    |      |      |               |       |
|------------|----|------|------|---------------|-------|
| Doors      | 8  | 1.20 | 2.10 | 0.23          | 4.637 |
| Window     | 16 | 1.20 | 1.60 | 0.23          | 7.066 |
| Ventilator | 12 | 0.60 | 0.60 | 0.23          | 0.994 |
|            |    |      |      | <u>12.696</u> |       |

- 10 Providing and fixing in position TMT - FE - 500 bar reinforcement of various diameters for R.C.C. pile caps, footings, foundations, slabs, beams columns, canopies, staircase, newels, chajjas, lintels pardis, copings, fins, arches etc. as per detailed designs, drawings and schedules. including cutting, bending, hooking the bars, binding with wires or tack welding and supporting as required complete.

|         |       |     |       |       |
|---------|-------|-----|-------|-------|
| Footing | 1.69  | 130 | 0.001 | 0.220 |
| COLUMNS | 0.47  | 120 | 0.001 | 0.056 |
| BEAMS   | 33.44 | 130 | 0.001 | 4.347 |

**4.623 MT**

- 11 Providing and laying Cast in situ/Ready Mix cement concrete M-15 of trap/ granite/quartzite/gneiss metal for coping to plinth or parapet, moulded or chamfered as per drawing or as directed including steel centering, plywood/ steel formwork compacting, roughening them if special finish is to be provided, finishing uneven and honeycombed surface and curing etc. complete. The Cement Mortar 1:3 plaster is considered for rendering uneven and honeycombed surface only. Newly laid concrete shall be covered by gunny bag, plastic, tarpaulin etc. (Wooden centering will not be allowed.)

G.F

|               |    |       |       |      |        |
|---------------|----|-------|-------|------|--------|
| TOP OF BRICKS | 12 | 3.50  | 0.23  | 0.10 | 0.966  |
|               | 8  | 3.83  | 0.23  | 0.10 | 0.705  |
|               | 1  | 35.00 | 23.50 | 0.10 | 82.250 |

**83.921 CUM**

- 12 Providing and fixing steel frame of angle 40 x 40 x 5 mm size for windows with 16 mm dia. mild steel bars horizontally at 10 cm c/c for ventilator portion and 15 cm c/c for remaining portion with M.S. flat of size 40 x 6 mm vertical at center including iron hold fast boxes for fixing 40 x 6 mm vertical at center including iron hold fast boxes for fixing shutters including welding finishing painting etc. complete.

|     |    |      |      |        |
|-----|----|------|------|--------|
| G.F | 16 | 1.20 | 1.60 | 30.720 |
|-----|----|------|------|--------|

**30.720 SQM**

- 13 Providing and fixing steel ventilator fully glassed partly top hung and partly fixed as per detailed drawing without hot dip zinc coating including fabricating glazing with plain obscured glass pane and approved type and quality and fastening without teak wood boxing and artitecture and oil painting two coat....etc complete

|     |    |      |      |       |
|-----|----|------|------|-------|
| G.F | 12 | 0.60 | 0.60 | 4.320 |
|-----|----|------|------|-------|

**4.320 SQM**

|    |   |            |    |       |      |                |         |      |
|----|---|------------|----|-------|------|----------------|---------|------|
| 14 | Providing internal cement plaster 12mm thick in single coat in cement mortar 1:4 without neeru finish to concrete or brick surfaces, in all positions including scaffolding and curing etc. complete.   |            |    |       |      |                |         |      |
|    |   | INNER SIDE | 2  | 35.00 | 3.15 | 220.500        |         |      |
|    |   |            | 2  | 23.50 | 3.15 | <u>148.050</u> | 313.350 | SQM  |
|    | Deduction   |            |    |       |      | <u>368.550</u> |         |      |
|    |   | Doors      | 8  | 1.20  | 2.10 | 20.160         |         |      |
|    |   | Window     | 16 | 1.20  | 1.60 | 30.720         |         |      |
|    |   | Ventilator | 12 | 0.60  | 0.60 | <u>4.320</u>   |         |      |
|    |   |            |    |       |      | <u>55.200</u>  |         |      |
| 15 | Providing internal cement plaster 20mm thick in two coats in cement mortar 1:4 without neeru finish, to concrete, brick surface, in all positions including scaffolding and curing etc. complete.   |            |    |       |      |                |         |      |
|    |   |            | 2  | 35.60 | 4.20 | 299.040        |         |      |
|    | Deduction   |            | 1  | 24.10 | 4.20 | <u>101.220</u> |         |      |
|    |   |            |    |       |      | 400.260        |         |      |
|    |   | Doors      | 8  | 1.20  | 2.10 | 20.160         |         |      |
|    |   | Window     | 16 | 1.20  | 1.60 | 30.720         |         |      |
|    |   | Ventilator | 12 | 0.60  | 0.60 | <u>4.320</u>   |         |      |
|    |   |            |    |       |      | <u>55.200</u>  |         |      |
| 16 | Providing sand faced plaster externally in cement mortar using approved screened sand, in all positions including base coat of 15 mm thick in cement mortar 1:4 using waterproofing compound at 1 kg per cement bag curing the same for not less than 2 days and keeping the surface of the base coat rough to receive the sand faced treatment 6 to 8 mm thick in cement mortar 1:4 finishing the surface by taking out grains and curing for fourteen days scaffolding etc. complete. |            |    |       |      |                | 345.060 | SQM  |
| 17 | Providing and applying Two coats of wall care Putty of 2mm thickness for plastered surface and 5-6mm thickness finished concrete surface to Ceiling and Walls to prepare surface even and smooth of Brands BIRLA WHITE, BERGER, BISION, J.K., make, etc complete.   | Front      | 1  | 23.50 | 4.00 | 94.000         | 94.00   | SQM. |
|    |   |            | 2  | 35.00 | 3.15 | 220.500        |         |      |
|    |   |            | 2  | 23.50 | 3.15 | <u>148.050</u> |         |      |
|    | Deduction   |            |    |       |      | <u>368.550</u> |         |      |
|    |   | Doors      | 8  | 1.20  | 2.10 | 20.160         |         |      |
|    |   | Window     | 16 | 1.20  | 1.60 | 30.720         |         |      |
|    |   | Ventilator | 12 | 0.60  | 0.60 | <u>4.320</u>   |         |      |
|    |   |            |    |       |      | <u>55.200</u>  | 313.35  | SQM  |



21 Providing and fixing colour coated Zincolume ( R ) AZ150 ( min 150 gms/sq.mt. total on each side ) profiled sheets for roofing. The feed material is manufactured out of nominal 0.45 mm Base Metal Thickness ( BMT ) (0.5 mm TCT ), Hi-strength steel with min.550 MPa yield strength, metallic hot dip coated with Aluminium-Zinc alloy (55% aluminium 43.4% zinc 1.6% silicon) with COLORBOND ( R ) steel quality super durable polyester paint coat ( with inorganic pigment). The paint shall have a total coating thickness of nominal 35 um, comprising of nominal 25 um exterior coat on top surface and nominal 10 um reverse coat on back surface. Profile sheet shall have nom. 950-1050 mm effective cover width and nominal 25-30 mm deep ribs with subtle square fluting in the five pan at nominal 180-250 mm center- to-center. The end rib shall be designed for anti-capillary groove. and return leg. The feed material should have coil manufacturers product details marked a regular interval. Including fasteners with min. fastened with min. 25 um Zinc-Tin alloy coated, Hex head, self-drilling screw etc. complete. (weight of profile 4.52 Kilogram/Square Metre)

22 Providing and fixing self supporting steel roofing system for a Godown or alike made up of structural grade steel sheet of 912 millimeter width ( tolerance + / - 2 millimeter ), moulded at site using mechanical press dies to the desired curve and shape to form 605 millimeter wide interlocking panels . The interlocking panels shall be pressed to close the seam forming water tight joints for a span of 25.00 meter having arch rise as 5.00 meter, arch length 29.00 meter The base material made up of imported galvalume steel complying to ASTM A792 having base metal thickness of 1.20 millimeter ( tolerace + / - 0.02 millimeter ) with alloy coating AZ 150 and paint coating of regular modified polyster , top coat 25 micron and bottom coat 12 micron as per approved colour , including fixing hangers , clamps etc.as may be necessary of Proflex standard, including fixing sky light of 2 millimeter thick polycarbonate sheet of size 2' x 14' and turbo ventilator of 24" diameter to be installed at every 30 feet along the length of roof including finishing , testing and cleaning etc. complete.

23 Filling in plinth and floors with contractors material/brought from outside and approved by Engineer incharge in layers of 15 cm to 20 cm including watering and compaction etc. complete.

|   |       |       |          |         |     |
|---|-------|-------|----------|---------|-----|
| 1 | 38.46 | 26.96 | 1036.882 | 1036.88 | SQM |
|---|-------|-------|----------|---------|-----|

|   |       |      |        |       |     |
|---|-------|------|--------|-------|-----|
| 1 | 26.96 | 3.00 | 80.880 | 80.88 | SQM |
|---|-------|------|--------|-------|-----|

|        |    |       |       |      |         |            |
|--------|----|-------|-------|------|---------|------------|
| Plinth | 1  | 35.00 | 23.50 | 0.90 | 740.250 |            |
| Column | 33 | 1.20  | 1.20  | 1.00 | 47.520  | 787.77 CUM |

24 Providing and fixing board displaying information, such as 'Name of work, Tender cost, Name of Contractor, Work completion and liability period etc', having rectangular shape of 1.20m x 0.90m size made out 18 gauge (1.25mm) thick mild steel sheet painted with one coat of Zinc chromate stoving primer and two coats of enamel paint on front side and grey stove enamel on back side and border / messages / symbols etc. with approved colour shade paint complete, on M.S. angle of size 35 x 35 x 3 mm frame with properly cross braced M.S. angles of size 35mmx35mmx3mm duly painted including Two M.S. angle iron posts of size 65 mm x 65 mm x 6 mm, 3.65 m long painted with alternate black and white bands of 25 cm width including all fixtures etc. and fixing the boards in 1:4:8 concrete block of size 60 cm x 60 cm x 75 cm including, excavation, refilling, transportation, and labour etc complete. Spec. No. As directed by Engineer in Charge

1

1

1

NO.

  
**Sandip H. Ingle**  
B. E. Civil Engg.  
Chandur Bazar  
Mob. 9673038120  
R.A./A.M.T./Er.-59/2017

# RATE ANALYSIS

NAME OF WORK:-O/W CONSTRUCTION OF G.I. SHED AT.SHIRAJGAON KASABA TA. CHANDUR BAZAR

| SR. NO            | ITEM  | TOTAL RATE     | UNIT       |
|-------------------|---|----------------|------------|
| 1                 | Excavation for foundation in earth, soil of all types, sand, gravel and soft murum, including removing the excavated material up to a distance of 50 m. beyond the building area and stacking and spreading as directed, dewatering, preparing the bed for the foundation and necessary back filling, ramming, watering including shoring and strutting etc. complete. (Lift upto 1.5 m.)<br>By Mechanical Means<br><br>Rate as per New SSR 20-21 WEF 1/10/2020<br>SSR it.No.21.02 Sr.No.714<br>Spec.No.MORTH 301 | <b>182.00</b>  | <b>CUM</b> |
| <b>Total Rate</b> |   | <b>182.00</b>  | <b>CUM</b> |
| 2                 | Excavation for foundation in hard murum including removing the excavated material upto a distance of 50 metres beyond the building area and stacking and spreading as directed, dewatering, preparing the bed for the foundation and necessary back filling, ramming, watering including shoring and strutting etc. complete. (Lift from 1.5 to 3.0m) By Manual Means<br><br>Rate as per New SSR 20-21 WEF 1/10/2020<br>SSR it.No.21.05 Sr.No.717<br>Spec.No.MORTH 301  | <b>331.00</b>  | <b>CUM</b> |
| <b>Total Rate</b> |   | <b>331.00</b>  | <b>CUM</b> |
| 3                 | Providing soling using 80 mm size trap metal in 15 cm. layer including filling voids with Crushed sand/grit, ramming, watering etc. complete.<br><br>Rate as per New SSR 20-21 WEF 1/10/2020<br>SSR it.No.21.40Sr.No.747<br>As directed by engg. Incharge   | <b>1105.00</b> |            |
|                   | Metal carting 1.00 387.66 CUM   | 387.7          |            |
|                   | Sand carting 0.15 566.00 CUM  | 84.9           |            |
| <b>Total Rate</b> |   | <b>1577.56</b> | <b>CUM</b> |

- 4 Providing and laying Cast in situ/Ready Mix cement concrete in M-10 of trap/ granite/ quartzite/ gneiss metal for foundation and bedding including bailing out water, formwork, laying/pumping, compacting, roughening them if special finish is to be provided, finishing if required and curing complete, with fully automatic micro processor based PLC with SCADA enabled reversible Drum Type mixer/concrete Batch mix plant (Pan mixer) etc. complete. With natural sand/V.S.I. quality Artificial Sand

Rate as per New SSR 20-21 WEF 1/10/2020

SSR it.No.24.01 Sr.No.820

Spec.No.Bd.E.1page No.287

5 % LESS

|                    |      |        |      |                |
|--------------------|------|--------|------|----------------|
|                    |      |        |      | <b>5449.00</b> |
|                    |      |        |      | <u>272.45</u>  |
|                    |      |        |      | <b>5176.55</b> |
| Cement carting     | 4.40 | 12.06  | BAG. | 53.0706        |
| Sand carting       | 0.47 | 566.00 | CUM  | 266.02         |
| Metal carting 40mm | 0.70 | 404.51 | CUM  | 283.157        |
| Metal carting 20mm | 0.24 | 404.51 | CUM  | 97.0824        |
| Total Rate         |      |        |      | <b>5875.88</b> |

- 5 Providing and laying in situ/Ready Mix cement concrete M-20 of trap / granite /quartzite/ gneiss metal for R.C.C. work in foundations like raft, strip foundations, grillage and footings of R.C.C. columns and steel stanchions etc. including bailing out water, formwork, laying/pumping cover blocks, compaction and curing roughening the surface if special finish is to be provided (Excluding reinforcement and structural steel) etc. complete, with fully automatic micro processor based PLC with SCADA enabled reversible Drum Type mixer/ concrete Batch mix plant (Pan mixer) etc. complete. With natural sand/V.S.I. quality Artificial Sand

Rate as per New SSR 20-21 WEF 1/10/2020

SSR it.No.25.11 Sr.No.829

Spec.No.Bd.E.3page No.298 and B.7,Page No.38

5 % LESS

|                    |       |        |      |                |
|--------------------|-------|--------|------|----------------|
|                    |       |        |      | <b>6440.00</b> |
|                    |       |        |      | <u>322.00</u>  |
|                    |       |        |      | <b>6118.00</b> |
| Cement carting     | 7.00  | 12.06  | BAG. | 84.43          |
| Sand carting       | 0.425 | 566.00 | CUM  | 240.55         |
| Metal carting 40MM | 0.00  | 404.51 | CUM  | 0.00           |
| Metal carting 20MM | 0.57  | 404.51 | CUM  | 230.57         |
| 12/10MM            | 0.28  | 404.51 | CUM  | 113.26         |
| Total Rate         |       |        |      | <b>6786.81</b> |

**5875.88** **5875.88** CUM

**6786.81** **6786.81** CUM

- 6 Providing and laying Cast in situ/Ready Mix cement concrete M-20 of trap / granite /quartzite/ gneiss metal for R.C.C. columns as per detailed designs and drawing or as directed including centering, formwork, cover blocks, laying/pumping, compaction finishing the formed surfaces with cement mortar 1:3 of sufficient minimum thickness to give a smooth and even surface or roughening if special finish is to be provided and curing etc. complete.(Excluding reinforcement and structural steel).with fully automatic micro processor based PLC with SCADA enabled reversible Drum Type mixer/ concrete Batch mix plant (Pan mixer) etc. complete. With natural sand/V.S.I. quality Artificial Sand

Rate as per New SSR 20-21 WEF 1/10/2020

SSR it.No.25.31 Sr.No.834

Spec.No.Bd.E.3page No.298 and B.7,Page No.38

5 % LESS

**12528.00**

626.40

**11901.60**

|                    |       |        |      |         |
|--------------------|-------|--------|------|---------|
| Cement carting     | 7.00  | 12.06  | BAG. | 84.43   |
| Sand carting       | 0.425 | 566.00 | CUM  | 240.55  |
| Metal carting 40MM | 0.00  | 404.51 | CUM  | 0.00    |
| Metal carting 20MM | 0.57  | 404.51 | CUM  | 230.571 |
| 12/10MM            | 0.28  | 404.51 | CUM  | 113.263 |

Total Rate

12570.41

**12570.41**

**CUM**

- 7 Providing and laying Cast in situ/Ready Mix cement concrete M-20 of trap / granite /quartzite/ gneiss metal for R.C.C. beams and lintels as per detailed designs and drawings or as directed including centering, formwork, cover blocks, laying/pumping, compaction and roughening the surface if special finish is to be provided and curing etc. complete. (Excluding reinforcement and structural steel). with fully automatic micro processor based PLC with SCADA enabled reversible Drum Type mixer/ concrete Batch mix plant (Pan mixer) etc. complete. With natural sand/V.S.I. quality Artificial Sand

Rate as per New SSR 20-21 WEF 1/10/2020

SSR it.No.25.50 Sr.No.839

Spec.No.Bd.E.6page No.300 and B.7,Page No.38

5 % LESS

**11104.00**

555.20

**10548.80**

|                    |       |        |      |        |
|--------------------|-------|--------|------|--------|
| Cement carting     | 7.00  | 12.06  | BAG. | 84.43  |
| Sand carting       | 0.425 | 566.00 | CUM  | 240.55 |
| Metal carting 40MM | 0.00  | 566.00 | CUM  | 0.00   |
| Metal carting 20MM | 0.57  | 404.51 | CUM  | 230.57 |
| 12/10MM            | 0.28  | 404.51 | CUM  | 113.26 |

Total Rate

11217.61

**11217.61**

**CUM**

- 8 Providing second class Burnt Brick masonry with conventional/ I.S. type bricks in cement mortar 1:6 in foundations and plinth of inner walls/ in plinth external walls including bailing out water manually , striking joints on unexposed faces, raking out joints on exposed faces and watering etc. Complete.

Rate as per New SSR 20-21 WEF 1/10/2020

SSR it.No.27.01 Sr.No.882

Spec.No.Bd.G.1page No.313

**6663.00**

|                |       |        |      |        |
|----------------|-------|--------|------|--------|
| Cement carting | 1.58  | 12.06  | BAG. | 19.06  |
| Sand carting   | 0.320 | 566.00 | CUM  | 181.12 |
| Brick carting  | 1.00  | 652.61 | CUM  | 652.61 |

Total Rate

7515.79

7515.79

CUM

- 9 Providing second class Burnt Brick masonry with conventional/ I.S. type bricks in cement mortar 1:6 in superstructure including striking joints, raking out joints, watering and scaffolding etc. Complete

Rate as per New SSR 20-21 WEF 1/10/2020

SSR it.No.27.05 Sr.No.885

Spec.No.Bd.G.1page No.313

**6874.00**

|                |      |        |      |        |
|----------------|------|--------|------|--------|
| Cement carting | 1.58 | 12.06  | BAG. | 19.06  |
| Sand carting   | 0.32 | 566.00 | CUM  | 181.12 |
| Brick carting  | 1.00 | 652.61 | NO   | 652.61 |

Total Rate

7726.79

7726.79

CUM

- 10 Providing and fixing in position TMT - FE - 500 bar reinforcement of various diameters for R.C.C. pile caps, footings, foundations, slabs, beams columns, canopies, staircase, newels, chajjas, lintels pardis, copings, fins, arches etc. as per detailed designs, drawings and schedules. including cutting, bending, hooking the bars, binding with wires or tack welding and supporting as required complete.

Rate as per New SSR 20-21 WEF 1/10/2020

SSR it.No.26.33 Sr.No.864

As directed by engg. Incharge

**65117.00**

|               |      |        |     |        |
|---------------|------|--------|-----|--------|
| Steel carting | 1.00 | 241.23 | MT. | 241.23 |
|---------------|------|--------|-----|--------|

Total Rate

65358.23

65358.23

MT

- 11 Providing and laying Cast in situ/Ready Mix cement concrete M-15 of trap/ granite/quartzite/gneiss metal for coping to plinth or parapet, moulded or chamfered as per drawing or as directed including steel centering, plywood/ steel formwork compacting, roughening them if special finish is to be provided, finishing uneven and honeycombed surface and curing etc. complete. The Cement Mortar 1:3 plaster is considered for rendering uneven and honeycombed surface only. Newly laid concrete shall be covered by gunny bag, plastic, tarpaulin etc. (Wooden centering will not be allowed.)

Rate as per New SSR 20-21 WEF 1/10/2020

SSR it.No.24.16 Sr.No.828

Spec.No.Bd.G.3page No.288

5 % LESS

5845.00

292.25

**5552.75**

|                    |       |        |      |        |
|--------------------|-------|--------|------|--------|
| Cement carting     | 6.00  | 12.06  | BAG. | 72.37  |
| Sand carting       | 0.440 | 566.00 | CUM  | 249.04 |
| Metal carting 40MM | 0.56  | 404.51 | CUM  | 226.53 |
| Metal carting 20MM | 0.22  | 404.51 | CUM  | 88.99  |
| 12/10MM            | 0.11  | 404.51 | CUM  | 44.50  |

Total Rate

6234.17

**6234.17**

**CUM**

- 12 Providing and fixing steel frame of angle 40 x 40 x 5 mm size for windows with 16 mm dia. mild steel bars horizontally at 10 cm c/c for ventilator portion and 15 cm c/c for remaining portion with M.S. flat of size 40 x 6 mm vertical at center including iron hold fast boxes for fixing 40 x 6 mm vertical at center including iron hold fast boxes for fixing shutters including welding finishing painting etc. complete.

Rate as per New SSR 20-21 WEF 1/10/2020

SSR it.No.39.34 Sr.No.1219

1795.00

Total Rate

1795.00

**1795.00**

**SQM**

- 13 Providing and fixing steel ventilator fully glassed partly top hung and partly fixed as per detailed drawing without hot dip zinc coating including fabricating glazing with plain obscured glass pane and approved type and quality and fastening without teak wood boxing and artitecture and oil painting two coat....etc complete

Rate as per New SSR 20-21 WEF 1/10/2020

SSR it.No.39.29 Sr.No.1214

Spec.No.Bd.T.36page No.500

2583.00

Total Rate

2583.00

**2583.00**

**SQM**

- 14 Providing internal cement plaster 12mm thick in single coat in cement mortar 1:4 without neeru finish to concrete or brick surfaces, in all positions including scaffolding and curing etc. complete.

Rate as per New SSR 20-21 WEF 1/10/2020

SSR it.No.32.04Sr.No.947

Spec.No.Bd.L.2A page No.368

264.00

(1)Cement carting 0.110 12.06 BAG. 1.33

(2)Sand carting 0.015 566.00 CUM 8.49

Total Rate

273.82

**273.82**

**SQM**

- 15 Providing internal cement plaster 20mm thick in two coats in cement mortar 1:4 without neeru finish, to concrete, brick surface, in all positions including scaffolding and curing etc.complete.

Rate as per New SSR 20-21 WEF 1/10/2020

SSR it.No.32.07 Sr.No.954

|                   |       |        |      |               |  |  |
|-------------------|-------|--------|------|---------------|--|--|
|                   |       |        |      | <b>366.00</b> |  |  |
| (1)Cement carting | 0.170 | 12.06  | BAG. | 2.050         |  |  |
| (2)Sand carting   | 0.025 | 566.00 | CUM  | 14.150        |  |  |

Total Rate

382.20      382.20      SQM

- 16 Providing sand faced plaster externally in cement mortar using approved screened sand, in all positions including base coat of 15 mm thick in cement mortar 1:4 using waterproofing compound at 1 kg per cement bag curing the same for not less than 2 days and keeping the surface of the base coat rough to receive the sand faced treatment 6 to 8 mm thick in cement mortar 1:4 finishing the surface by taking out grains and curing for fourteen days scaffolding etc.complete.

Rate as per New SSR 20-21 WEF 1/10/2020

SSR it.No.32.11Sr.No.956

|                   |       |        |     |               |  |  |
|-------------------|-------|--------|-----|---------------|--|--|
|                   |       |        |     | <b>599.00</b> |  |  |
| (1)Cement carting | 0.250 | 12.06  | BAG | 3.02          |  |  |
| (2)Sand carting   | 0.033 | 566.00 | CUM | 18.68         |  |  |

Total Rate

620.69      620.69      SQM

- 17 Providing and applying Two coats of wall care Putty of 2mm thickness for plastered surface and 5-6mm thickness finished concrete surface to Ceiling and Walls to prepare surface even and smooth of Brands BIRLA WHITE, BERGER, BISION, J.K., make, etc complete.

Rate as per New SSR 20-21 WEF 1/10/2020

SSR it.No.32.34 Sr.No.978

**87.00**

Total Rate

87.00      87.00      SQM

- 18 Providing and applying two coats of exterior acraylic emulsion paint conforming to corresponding I.S. of approved manufacture and of approved colour to the plastered surfaces including cleaning ,preparing the plaster surface, applying primer coat ,scaffolding if necessary , and watering the surface for two days etc complete.

Rate as per New SSR 20-21 WEF 1/10/2020

SSR it.No.35.25 Sr.No.1087

**218.00**

Total Rate

218.00      218.00      SQM

- 19 Providing and applying two coats of textured synthetic paint of approved shade and quality and one coat of primer before applying textured paint including scaffolding if necessary preparing surface by thoroughly cleaning oil, grease, dirt and other materials as required, etc. complete.

Rate as per New SSR 20-21 WEF 1/10/2020

SSR it.No.35.24Sr.No.1086

**147.00**

Total Rate

147.00      147.00      SQM

- 20 Providing and fabricating structural steel work in rolled sections like joists, channels, angles, tees etc. as per detailed design and drawings or as directed including cutting, fabricating, hoisting, erecting, fixing in position making riveted / bolted /welded connections without connecting plates, braces etc. and including one coat of anticorrosive paint and over it two coats of oil painting of approved quality and shade etc. complete.

Rate as per New SSR 20-21 WEF 1/10/2020  
SSR it.No.23.01 Sr.No.809

75938.00

Total Rate

75938.00

75938.00

M.T

- 21 Providing and fixing colour coated Zinalume ( R ) AZ150 ( min 150 gms/sq.mt. total on each side ) profiled sheets for roofing. The feed material is manufactured out of nominal 0.45 mm Base Metal Thickness ( BMT ) (0.5 mm TCT ), Hi-strength steel with min.550 MPa yield strength, metallic hot dip coated with Aluminium-Zinc alloy (55% aluminium 43.4% zinc 1.6% silicon) with COLORBOND ( R ) steel quality super durable polyester paint coat ( with inorganic pigment). The paint shall have a total coating thickness of nominal 35 um, comprising of nominal 25 um exterior coat on top surface and nominal 10 um reverse coat on back surface. Profile sheet shall have nom. 950-1050 mm effective cover width and nominal 25-30 mm deep ribs with subtle square fluting in the five pan at nominal 180-250 mm center- to-center. The end rib shall be designed for anti-capillary groove. and return leg. The feed material should have coil manufacturers product details marked a regular interval. Including fasteners with min. fastened with min. 25 um Zinc-Tin alloy coated, Hex head, self-drilling screw etc. complete. (weight of profile 4.52 Kilogram/Square Metre)

Rate as per New SSR 20-21 WEF 1/10/2020  
SSR it.No.38.34 Sr.No1167

1042.00

Total Rate

1042.00

1042.00

SQM

- 22 Providing and fixing self supporting steel roofing system for a Godown or alike made up of structural grade steel sheet of 912 millimeter width ( tolerance + / - 2 millimeter ), moulded at site using mechanical press dies to the desired curve and shape to form 605 millimeter wide interlocking panels . The interlocking panels shall be pressed to close the seam forming water tight joints for a span of 25.00 meter having arch rise as 5.00 meter, arch length 29.00 meter The base material made up of imported galvalume steel complying to ASTM A792 having base metal thickness of 1.20 millimeter ( tolerace + / - 0.02 millimeter ) with alloy coating AZ 150 and paint coating of regular modified polyester , top coat 25 micron and bottom coat 12 micron as per approved colour , including fixing hangers , clamps etc.as may be necessary of Proflex standard, including fixing sky light of 2 millimeter thick polycarbonate sheet of size 2' x 14' and turbo ventilator of 24" diameter to be installed at every 30 feet along the length of roof including finishing , testing and cleaning etc. complete.

Rate as per New SSR 20-21 WEF 1/10/2020  
SSR it.No.38.43Sr.No1242

2176.00

Total Rate

2176.00

2176.00

SQM

- 23 Filling in plinth and floors with contractors material/brought from outside and approved by Engineer incharge in layers of 15 cm to 20 cm including watering and compaction etc. complete.

Rate as per New SSR 20-21 WEF 1/10/2020  
SSR it.No.21.37 Sr.No.744

Spec.No.As Directed by incharge

|  |                |      |        |     |               |
|--|----------------|------|--------|-----|---------------|
|  |                |      |        |     | <b>446.00</b> |
|  | Murrun carting | 1.00 | 387.66 | CUM | 387.66        |

Total Rate

|  |  |  |  |  |               |               |            |
|--|--|--|--|--|---------------|---------------|------------|
|  |  |  |  |  | <b>833.66</b> | <b>833.66</b> | <b>CUM</b> |
|--|--|--|--|--|---------------|---------------|------------|

- 24 Providing and fixing board displaying information, such as 'Name of work, Tender cost, Name of Contractor, Work completion and liability period etc', having rectangular shape of 1.20m x 0.90m size made out 18 gauge (1.25mm) thick mild steel sheet painted with one coat of Zinc chromate stoving primer and two coats of enamel paint on front side and grey stove enamel on back side and border / messages / symbols etc. with approved colour shade paint complete, on M.S.angle of size 35 x 35 x 3 mm frame with properly cross braced M.S. angles of size 35mmx35mmx3mm duly painted including Two M.S. angle iron posts of size 65 mm x 65 mm x 6 mm, 3.65 m long painted with alternate black and white bands of 25 cm width including all fixtures etc.and fixing the boards in 1:4:8 concrete block of size 60 cm x 60 cm x 75 cm including, excavation, refilling, transportation, and labour etc complete. Spec. No. As directed by Engineer in Charge

Rate as per New SSR 20-21 WEF 1/10/2020  
SSR it.No.6.36 Sr.No.288

Spec.No.MORTH 801

**8848.00**

Total Rate

|  |  |  |  |  |                |                |            |
|--|--|--|--|--|----------------|----------------|------------|
|  |  |  |  |  | <b>8848.00</b> | <b>8848.00</b> | <b>NO.</b> |
|--|--|--|--|--|----------------|----------------|------------|

  
**Sandip H. Ingle**  
 B. E. Civil Engg.  
 Chandur Bazar  
 Mob. 9673038120  
 R. A./A.M.T./Er-59/2017


NAME OF WORK:-OW CONSTRUCTION OF G.I. SHED AT.SHIRAJGAON KASABA TA. CHANDUR BAZAR

LEAD STATEMENT

| Sr.No | Name of Material | Lead From     | Lead in Km | Rate of Carting | Net Lead | Remarks |
|-------|------------------|---------------|------------|-----------------|----------|---------|
| 1     | 2                | 3             | 5          | 6               | 7        | 9       |
| 1     | 80 mm Metal      | Kothara       | 20.00      | 387.66          | 387.66   | 387.66  |
| 2     | 40 mm metal      | Kothara       | 20.00      | 404.51          | 404.51   | 404.51  |
| 3     | 20 mm metal      | Kothara       | 20.00      | 404.51          | 404.51   | 404.51  |
| 4     | Murrum           | Kothara       | 20.00      | 387.66          | 387.66   | 387.66  |
| 5     | Sand             | Asegaon       | 35.00      | 566.00          | 566.00   | 566.00  |
| 6     | Cement           | Chandur Bazar | 15.00      | 241.23          | 241.23   | 12.06   |
| 7     | Steel            | Chandur Bazar | 15.00      | 241.23          | 241.23   | 241.23  |
| 8     | bricks           | kuralpurna    | 10.00      | 652.61          | 652.61   | 652.61  |
| 9     | Tiles            | amravati      | 45.00      | 52.09           | 52.09    | 52.09   |

CERTIFICATE

This is to certify that the Leads shown in above statement are correct and economical Lead is taken as per my knowledge. Materials are in good condition at quarry site.

  
**Sandip H. Ingle**  
 B.E. Civil Engg.  
 Chandur Bazar  
 Mob. 9673038120  
 R.A./A.M.T./Er-59/2017

## Statement Showing Royalty of Materials

NAME OF WORK:-OW CONSTRUCTION OF G.I. SHED AT.SHIRAJGAON KASABA TA. CHANDUR BAZAR

| Sr.No of Item | Item of Work       | Material required |          |          |          |          |          |          | Total Quantity of Royalty |
|---------------|--------------------|-------------------|----------|----------|----------|----------|----------|----------|---------------------------|
|               |                    | Quantity          | 80 mm    |          | sand     |          | Murum    |          |                           |
|               |                    |                   | Rate/cum | Quantity | Rate/cum | Quantity | Rate/cum | Quantity |                           |
| 3             | 80 mm soling       | 178.324           | 1.0      | 178.324  | 0.15     | 26.75    | 0.00     | 0.00     | 205.07                    |
| 4             | P.C.C M10          | 90.96             | 0.00     | 0.00     | 0.47     | 42.75    | 0.00     | 0.00     | 42.75                     |
| 5             | R.C.C.Footng M20   | 20.22             | 0.00     | 0.00     | 0.425    | 8.60     | 0.00     | 0.00     | 8.60                      |
| 6             | R.C.C.Column M20   | 25.839            | 0.00     | 0.00     | 0.425    | 10.98    | 0.00     | 0.00     | 10.98                     |
| 7             | R.C.C.Beam M20     | 33.437            | 0.00     | 0.00     | 0.425    | 14.21    | 0.00     | 0.00     | 14.21                     |
| 11            | P.C.C M-15         | 83.921            | 0.00     | 0.00     | 0.44     | 36.925   | 0.00     | 0.00     | 36.93                     |
| 12            | 12 mm Plaster      | 313.35            | 0.00     | 0.00     | 0.015    | 4.700    | 0.00     | 0.00     | 4.70                      |
| 13            | sand faced plaster | 94.00             | 0.00     | 0.00     | 0.025    | 2.350    | 0.00     | 0.00     | 2.35                      |
| 16            | Plinth filling     | 787.77            | 0.00     | 0.00     | 0.00     | 0.00     | 1.00     | 787.77   | 787.77                    |
|               |                    |                   |          | 178.324  |          | 147.26   |          | 787.77   | 1113.358                  |

216.25    178.32    237.45    147.26    216.25    787.77    243886


Royalty Charges

243886

## CEMENT CONSUMPTION STATEMENT

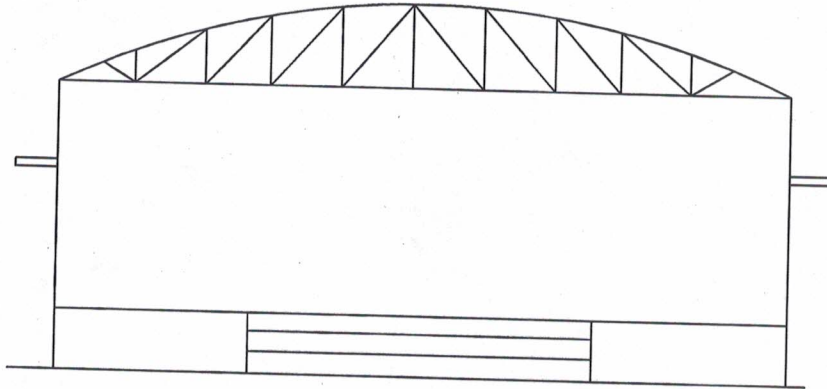
NAME OF WORK:-OW CONSTRUCTION OF G.I. SHED AT.SHIRAJGAON KASABA TA. CHANDUR BAZAR

| ITEM NO | TEMS                                  | QTY    | BAG/UNIT | UNIT  | TOTAL |
|---------|---------------------------------------|--------|----------|-------|-------|
| 1       | Providing & laying PCC M10            | 90.96  | 4.40     | CUM.  | 400   |
| 2       | Providing & laying M20 RCC Foundation | 20.22  | 7.00     | CUM.  | 142   |
| 3       | Providing & laying M20 RCC Column     | 25.84  | 7.00     | CUM.  | 181   |
| 4       | Providing & laying M20 RCC Beam       | 33.44  | 7.00     | CUM.  | 234   |
| 6       | M15 Copping                           | 83.92  | 6.00     | CUM.  | 504   |
| 7       | 12 MM. Plaster                        | 313.35 | 0.110    | SQM   | 34    |
| 8       | 20 MM. Plaster                        | 94.00  | 0.170    | SQM   | 16    |
| 9       | Brick masonry                         | 39.93  | 1.58     | CUM.  | 63    |
|         |                                       |        |          | TOTAL | 1574  |

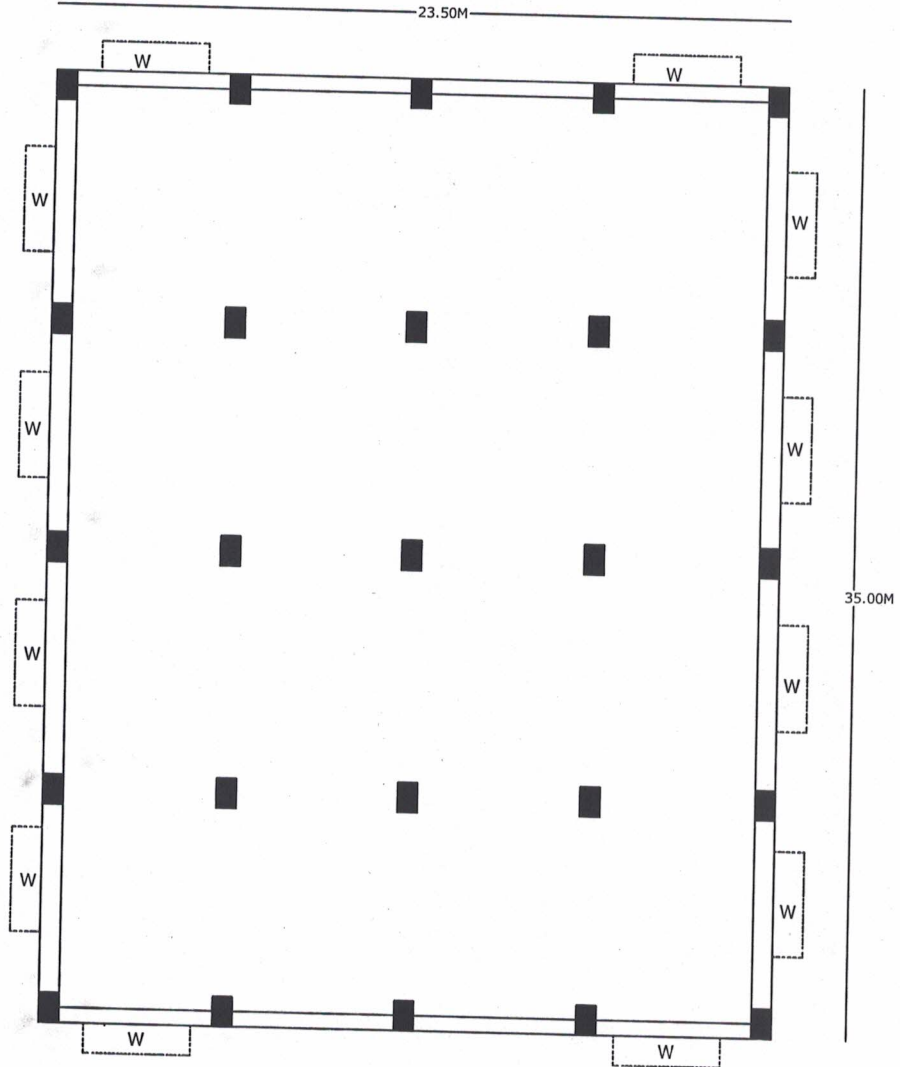
  
**Sandip H Ingle**  
 B.E. Civil Engg.  
 Chandur Bazar  
 Mob. 9673038120  
 R.A./A.M.T./En-59/2017

MAP

NAME OF WORK :-CONSTRUCTION OF G.I SHED FOR  
AT. SHIRAJGAON KASBA TA. CHANDUR BAZAR DISTT.AMRAVATI



FRONT ELEVATION



PLAN FOR G.I. SHED

  
**Sandip H. Ingle**  
B. E. Civil Engg.  
Chandur Bazar  
Mob. 9673038120  
R. A./A.M.T./Er-59/2017